



Firmware update instructions v1.2

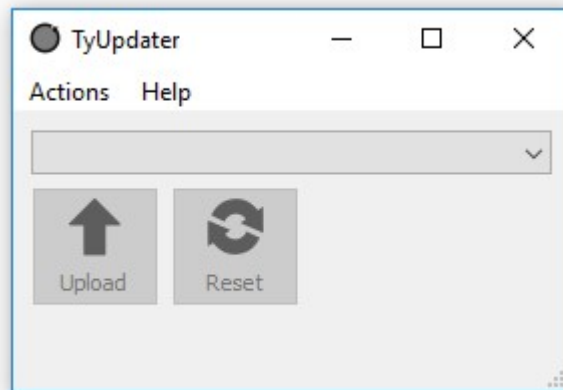
Required hardware: Windows PC, Micro USB cable, Micro SD card (32 Gigs or less).

Processor Update:

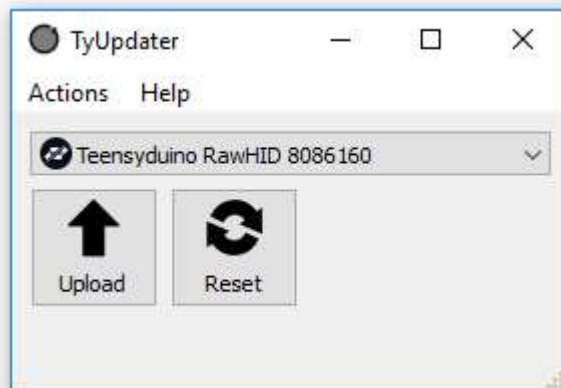
Here is a link for the tool used to upload the firmware:
<http://www.btigauges.com/uploads/6/4/9/9/64990431/tyupdater.exe>

Open the TyUpdater and plug in the USB cable to the processor. The gauge should **NOT** be connected to the car (unplug the connector on the back of the gauge or dash)

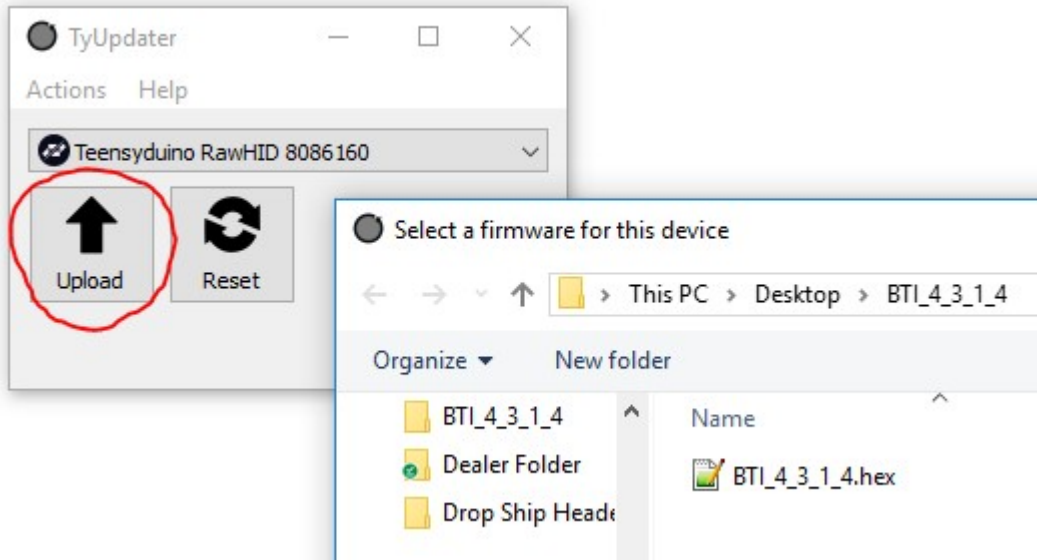
You will see something similar to this:



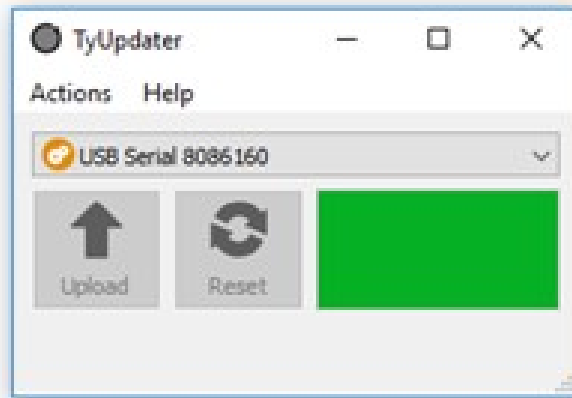
Once the processor is recognized by your Windows PC, the Updater will look similar to this:



Click on the Upload button and you will need to select the HEX file that is needed for your BTI gauge product.



Click Upload and the new firmware should load.



The new firmware should be loaded and should require no further action.

Display file Update:

This process will require a “.tft” file for the BTI gauge product that you wish to update and a micro SD card 32 Gigs or less.

Copy the TFT display file to a micro SD card and insert the card into the slot on the display.

Apply power to the display and you should see the display begin to update. Once the display shows success, remove the micro SD card and remove power from the gauge. Reapply power back to the gauge with the card removed and the update should finish. Once the update is finished, the BTI gauge should be completely updated.

Note that not all micro SD cards have proven to be compatible.

We have noticed some issues with the SanDisk Ultra SD cards.

We use the SanDisk industrial SD cards and have no issues.