



Firmware update instructions v1.1

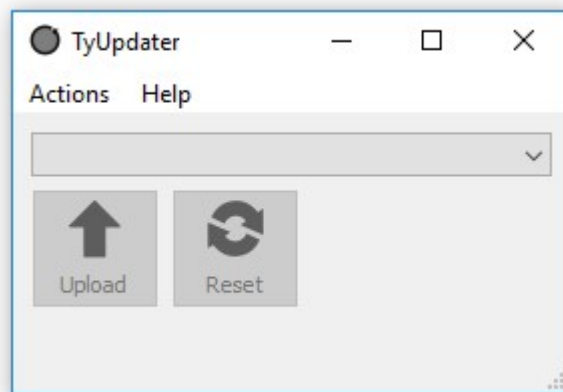
Required hardware: Windows PC, Micro USB cable, Micro SD card. (Some SD cards may not be compatible)

Processor Update:

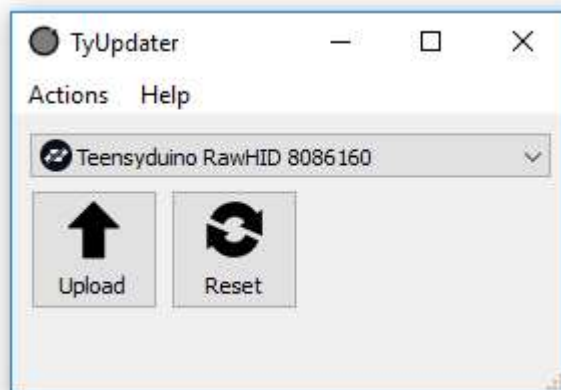
Here is a link for the tool used to upload the firmware:
<http://www.btigauges.com/uploads/6/4/9/9/64990431/tyupdater.exe>

Open the TyUpdater and plug in the USB cable to the processor. The gauge should **NOT** be connected to the car (unplug the connector on the back of the gauge or dash)

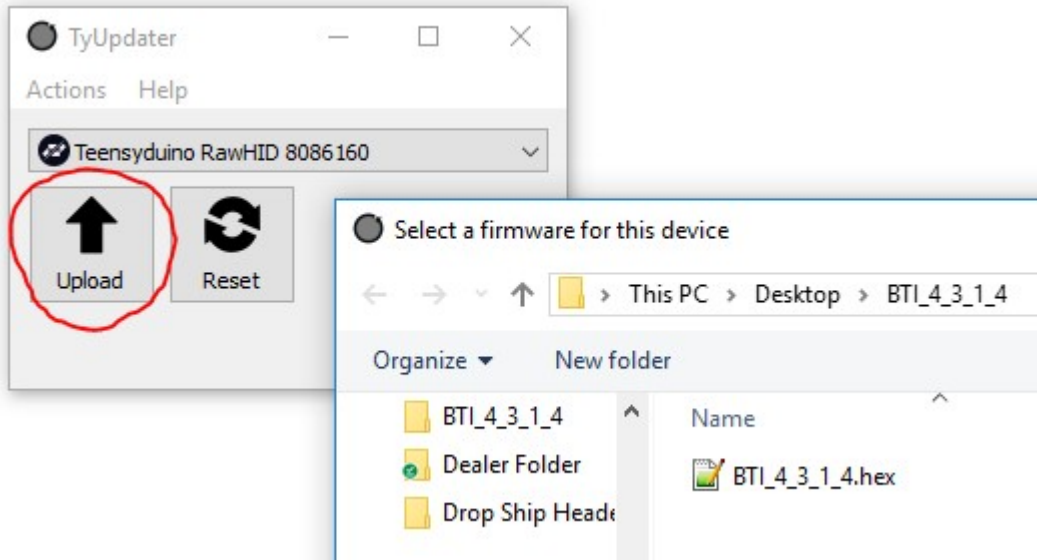
You will see something similar to this:



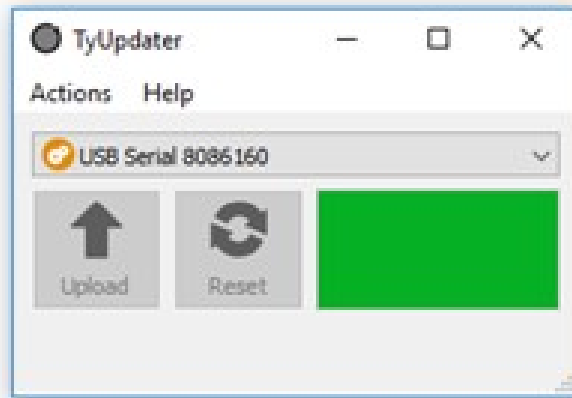
Once the processor is recognized by your Windows PC, the Updater will look similar to this:



Click on the Upload button and you will need to select the HEX file that is needed for your BTI gauge product.



Click Upload and the new firmware should load.



The new firmware should be loaded and should require no further action.